

The Sonoma fire pit is handmade by Dekko in North America. Ships with your choice of NG or LP burner, one decorative aggregate option and chrome On/Off key.

Size: 72"W x 33"D x 16"H
CSA/UL Approved Burner Assembly



	Manual Ignition	Electronic Ignition
BTU/Hr	65,000	150,000
Weight	215 lbs	215 lbs
Fuel Options	NG/LP	NG/LP

Optional Accessories:

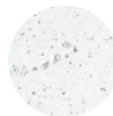
Propane Tank Cover 16"W x 16"D x 21"H

Glass Wind Guard 55"W x 15"D x 6"H

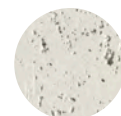
Vinyl Weather Cover

Powder Coated Aluminium Table Top 72"W x 33"D

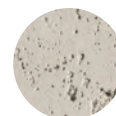
Colour Options



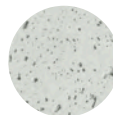
NATURAL



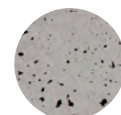
LIMESTONE



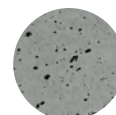
CLAY



ASH



SANDSTONE



CHARCOAL

Decorative Aggregate Options



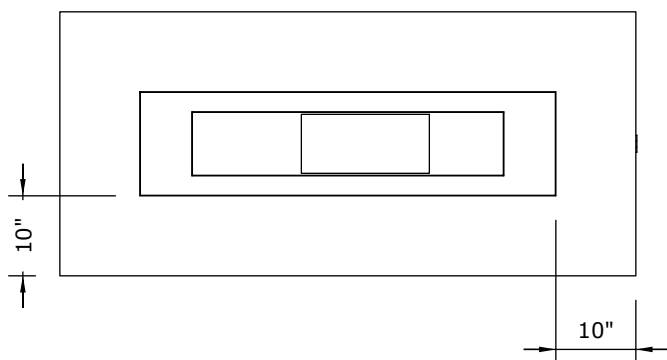
IVORY BEACH
STONE



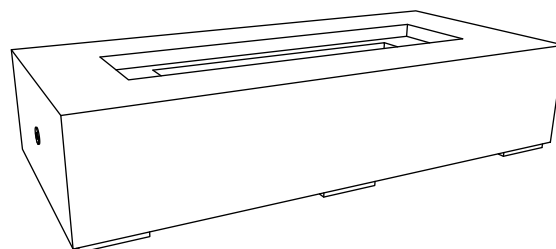
SLATE BEACH
STONE



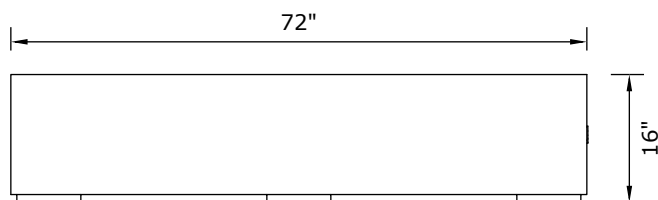
BLACK LAVA
ROCK



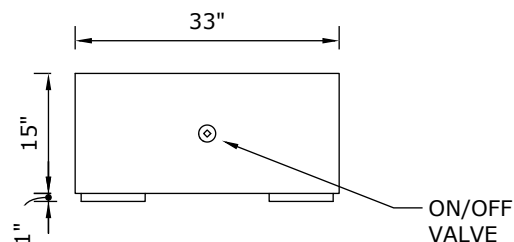
PLAN VIEW



PERSPECTIVE VIEW



FRONT ELEVATION

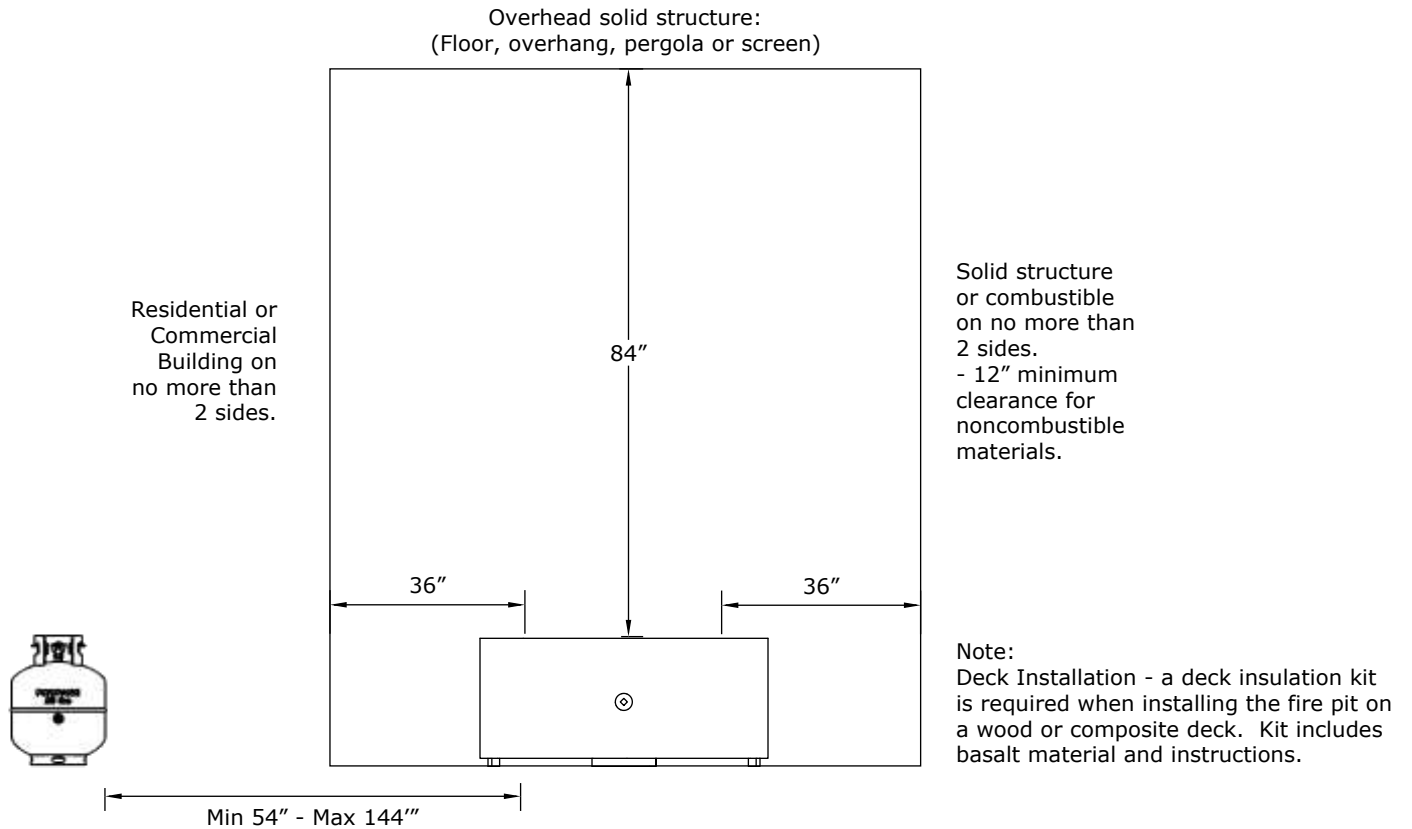


SIDE ELEVATION

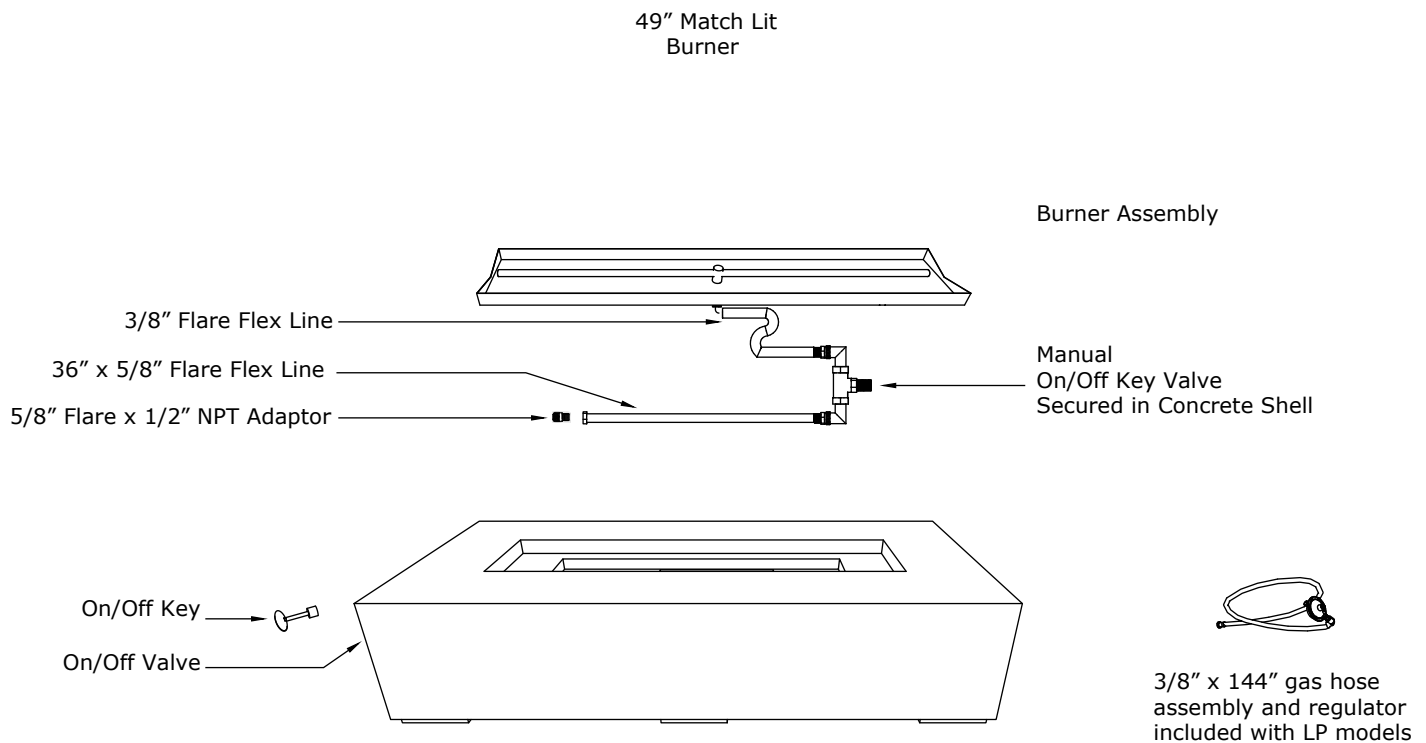
ON/OFF
VALVE



Clearances

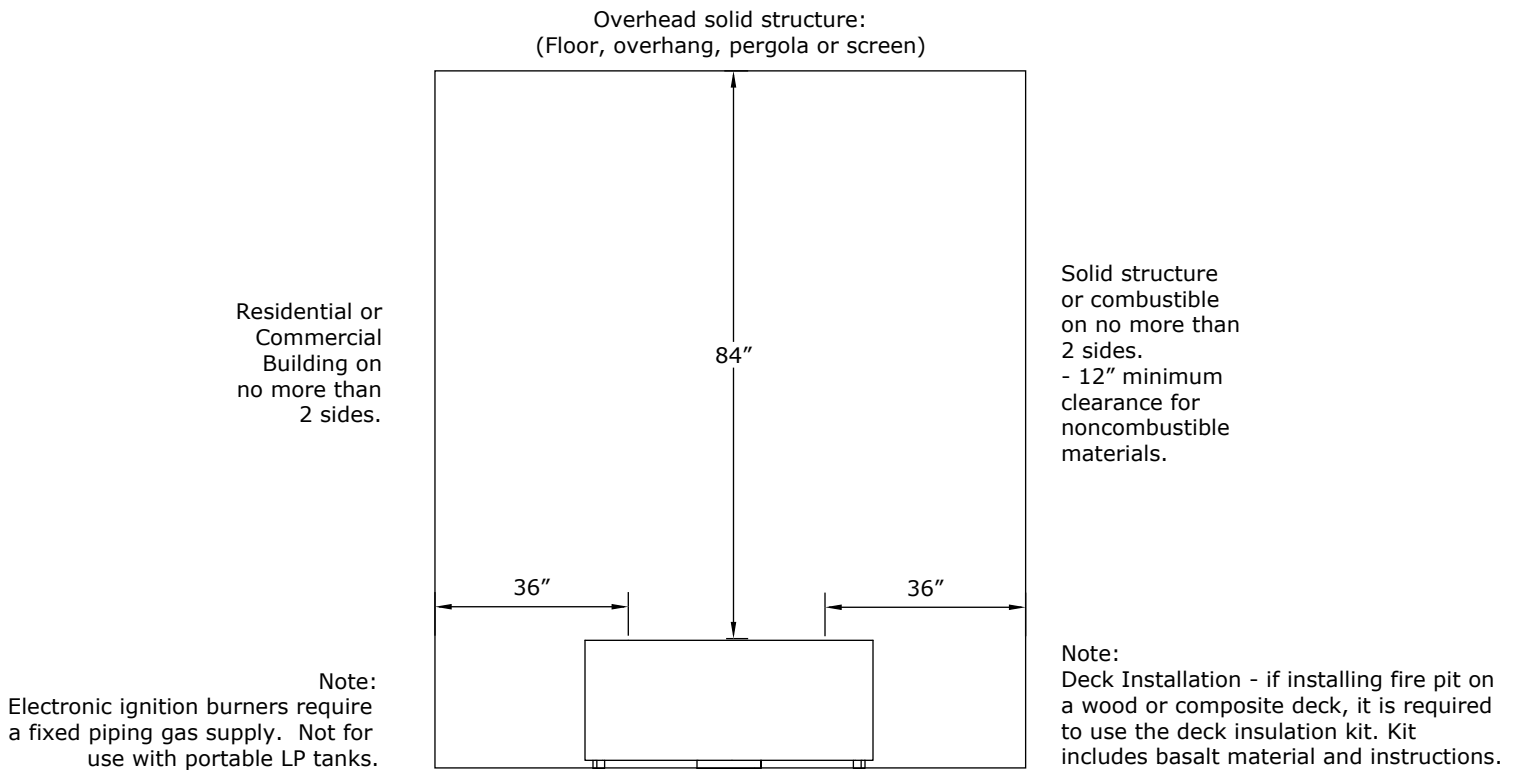


Burner Assembly





Clearances:



Burner Assembly

Electrical:

120V Outdoor receptacle required.
Must be installed and grounded in accordance with local codes.

49" Electronic Ignition
Burner

