

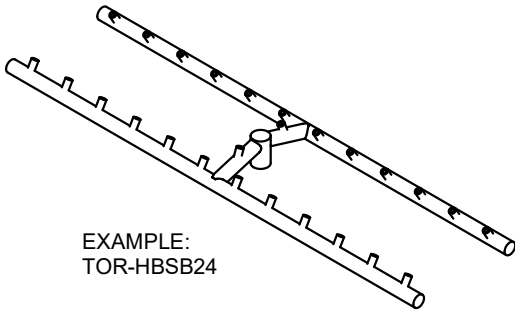
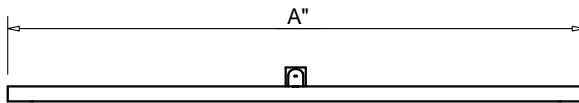
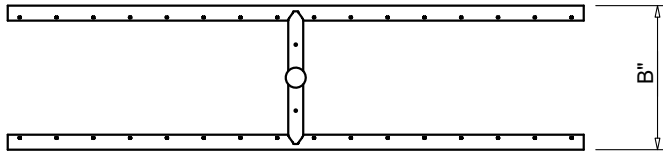


FIRE INSPIRED[®]

Hearth Products Controls Co
OUTDOOR USE ONLY

FOR COMMERCIAL AND RESIDENTIAL USE

HEARTH PRODUCTS CONTROLS
 2225 LYONS RD.
 MIAMISBURG, OH 45342
 TOLL FREE: 877.585.9800
 PHONE: 937.436.9800
 www.hpcfire.com



EXAMPLE:
 TOR-HBSB24

MODEL NUMBER		SIZE (A")	SIZE (B")	RECOMMENDED BTU		HUB SIZE
				H-BURNER	TORPEDO	
TOR-	HBSB18	18"	6"	60K	125K	1/2"
TOR-	HBSB24	24"	6"	90K	150K	1/2"
TOR-	HBSB30	30"	8"	90K	175K	1/2"
TOR-	HBSB36	36"	8"	150K	200K	1/2"
TOR-	HBSB48	48"	10"	150K	250K	1/2"
TOR-	HBSB60	60"	10"	250K	300K	1/2"
TOR-	HBSB72	72"	10"	300K	300K	1/2"
TOR-	HBSB84	84"	10"	300K	300K	1/2"

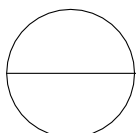
*FOR TORPEDO BURNERS ADD TOR-

Material:

1. ALL BURNERS ARE 304 STAINLESS STEEL

Notes:

1. FOR USE WITH FIXED PIPING SYSTEMS ONLY.
2. ALL ENCLOSURES REQUIRE 4 each 18 SQ/IN VENTS ON OPPOSING SIDES AND ADEQUATE DRAINAGE.
3. RESIDENTIAL GAS PRESSURE ONLY
 - Natural Gas: Supply Pressure: Minimum: 3.5" W.C.; Maximum: 7.0" W.C.
 - LP Gas: Supply Pressure: Minimum: 8" W.C.; Maximum: 11.0" W.C.
4. MODIFICATION OF PRODUCT WILL VOID ANY WARRANTY.
5. FOLLOW ALL MANUFACTURER INSTALLATION INSTRUCTIONS AND LOCAL CODES.
6. ALL DIMENSIONS ARE CONSIDERED TRUE AND REFLECT MANUFACTURER'S SPECIFICATIONS AS OF THE REVISION DATE.
7. DO NOT SCALE DRAWING.
8. THESE DRAWINGS ARE FOR SIZING AND PLANNING PURPOSES. ALL INFORMATION CONTAINED HEREIN WAS CURRENT AT THE TIME OF DEVELOPMENT. THE MANUFACTURER'S RESPONSIBLE FOR THE ACCURACY OF THE DRAWING.



H-BURNERS



REVISION DATE 7/6/2021