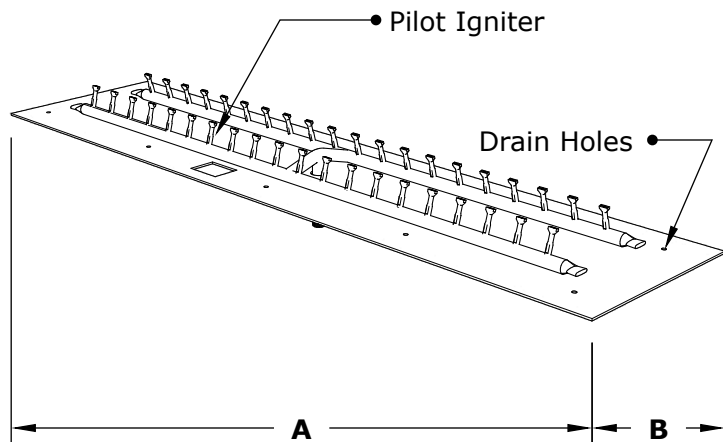
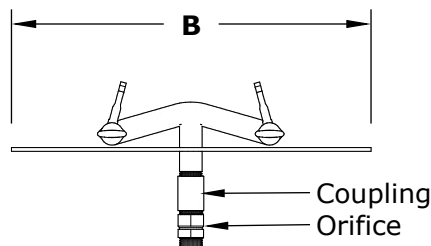


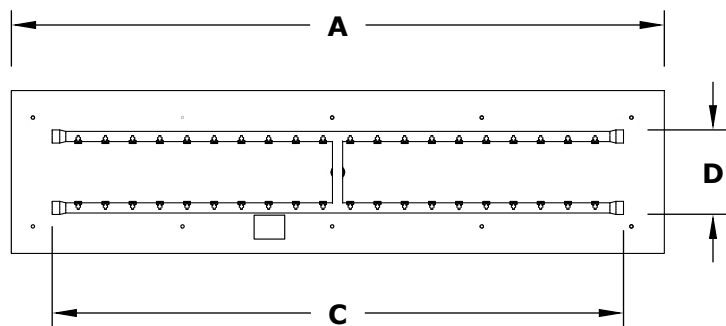
# FLAT PAN & SS 'H' BULLET BURNER MATCH LIT IGNITION



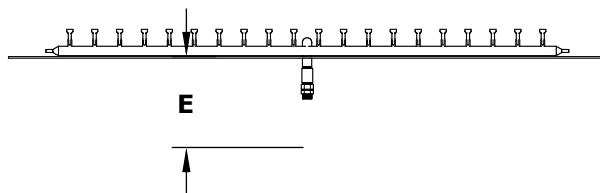
**ISOMETRIC VIEW**



**RIGHT SIDE VIEW**



**TOP VIEW**

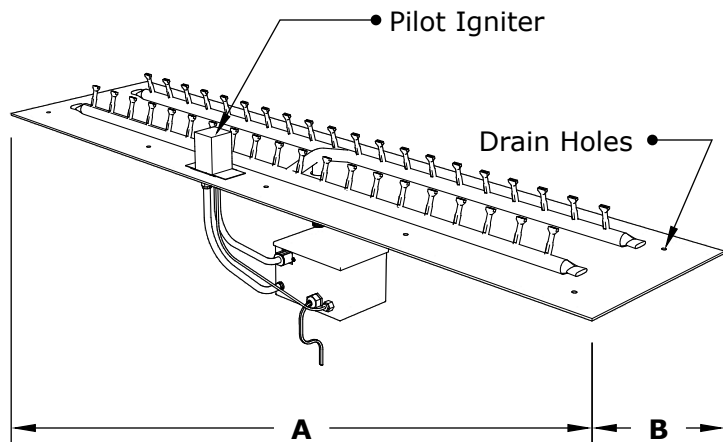


**FRONT SIDE VIEW**

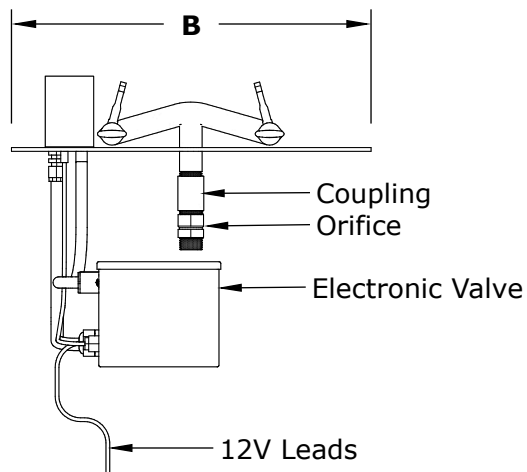
SKU	A	B	C	D	E	BTU
OPT-BFP1224R	24"	12"	18"	6"	10"	85,000
OPT-BFP1236R	36"	12"	24"	6"	10"	110,000
OPT-BFP1248R	48"	12"	36"	6"	10"	160,000
OPT-BFP1260R	60"	12"	48"	6"	10"	205,000
OPT-BFP1272R	72"	12"	60"	6"	10"	255,000
OPT-BFP1284R	84"	12"	72"	6"	10"	300,000
OPT-BFP1296R	96"	12"	84"	6"	10"	350,000

Pan Material: 304 Stainless Steel  
 Burner Material: 304 Stainless Steel  
 Ignition Type: Match Lit  
 Includes: Pan, Burner

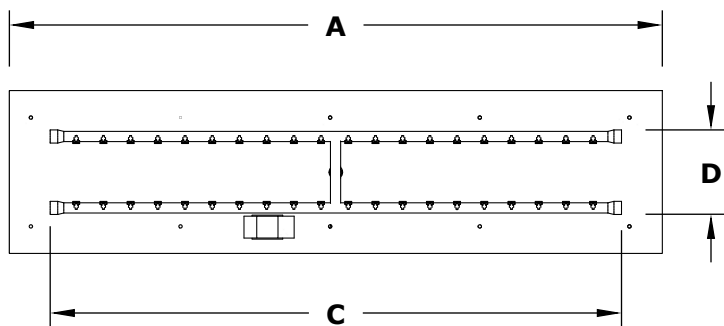
# FLAT PAN & SS 'H' BULLET BURNER 12V ELECTRONIC IGNITION



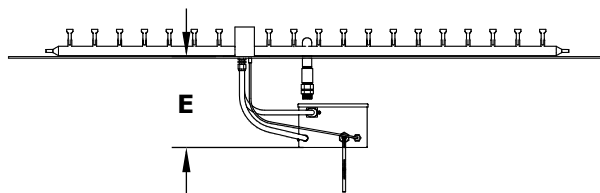
**ISOMETRIC VIEW**



**RIGHT SIDE VIEW**



**TOP VIEW**



**FRONT SIDE VIEW**

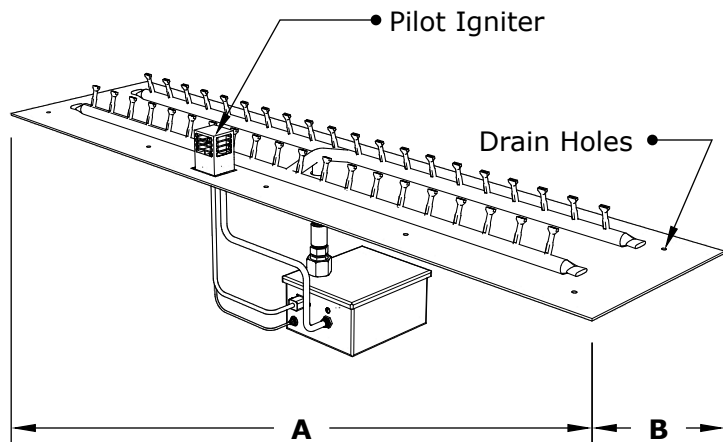
SKU	A	B	C	D	E	BTU
OPT-BFP1224RE12	24"	12"	18"	6"	10"	85,000
OPT-BFP1236RE12	36"	12"	24"	6"	10"	110,000
OPT-BFP1248RE12	48"	12"	36"	6"	10"	160,000
OPT-BFP1260RE12	60"	12"	48"	6"	10"	205,000
OPT-BFP1272RE12	72"	12"	60"	6"	10"	255,000
OPT-BFP1284RE12	84"	12"	72"	6"	10"	300,000
OPT-BFP1296RE12	96"	12"	84"	6"	10"	350,000

Pan Material: 1/8" Thick Aluminum  
 Burner Material: 304 Stainless Steel  
 Ignition Type: 12V Electronic Ignition  
 (12V Transformer Included)

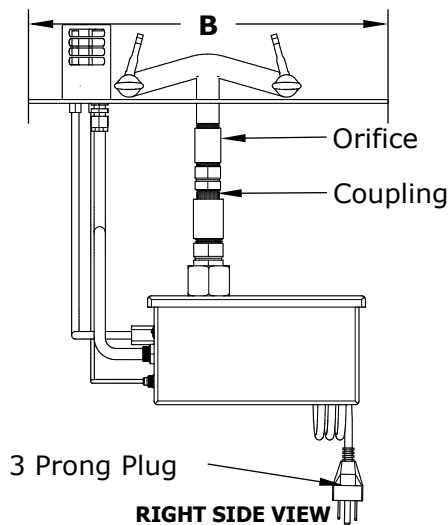
**12V ELECTRONIC IGNITION**  
 ANSI Z21.97-(2017) / CSA 2.41-(2017)



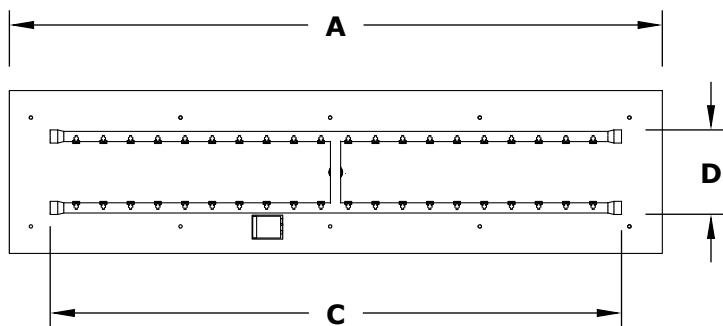
# FLAT PAN & SS 'H' BULLET BURNER 110V ELECTRONIC IGNITION



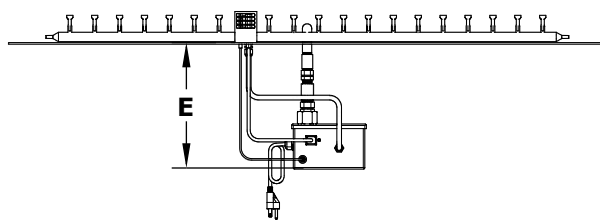
ISOMETRIC VIEW



RIGHT SIDE VIEW



TOP VIEW



FRONT SIDE VIEW

SKU	A	B	C	D	E	BTU
OPT-BFP1224RE110	24"	12"	18"	6"	10"	85,000
OPT-BFP1236RE110	36"	12"	24"	6"	10"	110,000
OPT-BFP1248RE110	48"	12"	36"	6"	10"	160,000
OPT-BFP1260RE110	60"	12"	48"	6"	10"	205,000
OPT-BFP1272RE110	72"	12"	60"	6"	10"	255,000
OPT-BFP1284RE110	84"	12"	72"	6"	10"	300,000
OPT-BFP1296RE110	96"	12"	84"	6"	10"	350,000

Pan Material: 1/8" Thick Aluminum  
 Burner Material: 304 Stainless Steel  
 Ignition Type: 110V Electronic Ignition  
 (110V Transformer Included)

**110V ELECTRONIC IGNITION**  
 ANSI Z21.97-(2017) / CSA 2.41-(2017)

